

Users' Manual

The is a full range UHF antenna splitter that routes antenna signals from a pair of antenna to several receivers in a multi-channel system.

The also amplifies the RF signals to compensate the loss incurred from splitting signal power.

Built-in DC distribution provides four DC 12V power supply for receivers.

A single can support up to four wireless receiver. Multiple can be cascaded for more wireless receivers.

Specification

Frequency Range : 470-952 MHz

RF Output Level(Gain) : -0.5 ~ 3 dB

Output Connection Isolation : ≥ 25 dB

Third Order Intercept Point : 24 dBm

Impedance : 50 Ohm

Power Consumption : 60W

Input AC Voltage : 100-240V switching power

Output DC Voltage : 12V/1A x 4

Antenna Booster DC Voltage : 12V

Dimension : 250*480*45 mm (standard 19" and 1 U case)

Net Weight : 2.15 Kgs

System Components

DC cable for receiver connection x 4 pieces

Antenna cable for receiver connection and front antennas x 10 pieces

AC cord x 1 piece

Front-mount antenna hardware x 2 pieces

Connections

See illustration NO.1

Feature

- ① Power On/Off switch
- ② AC INPUT
- ③ DC OUTPUT
- ④ ANT. A IN
- ⑤ ANT. A ADAPTOR
- ⑥ ANT. B IN
- ⑦ ANT. B ADAPTOR
- ⑧ ANT. A OUTPUT
- ⑨ ANT.B OUTPUT

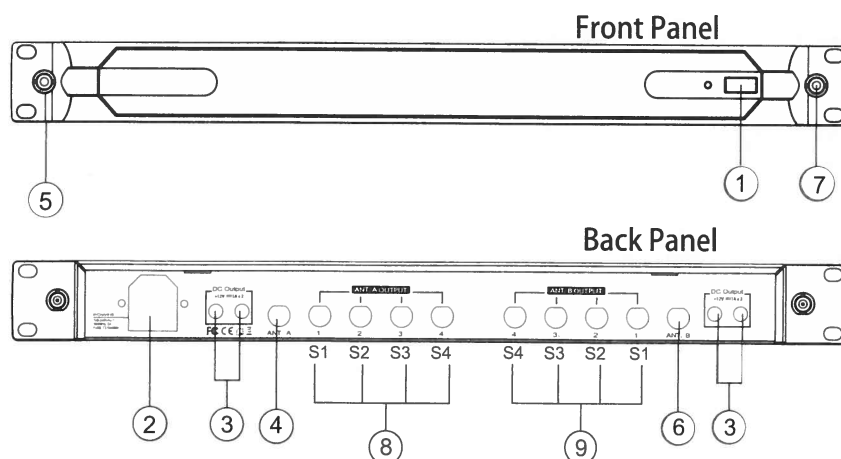


illustration NO.1

