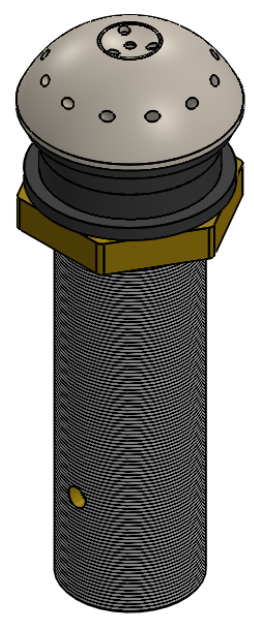
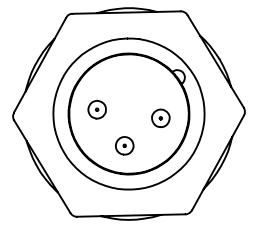


Side

Front

Back



XLR Pin configuration  
 Pin 1 screen  
 Pin 2 Phase +  
 Pin 3 Phase -

**PROPRIETARY AND CONFIDENTIAL**  
 THE INFORMATION CONTAINED IN THIS DRAWING IS THE SOLE PROPERTY OF CLOCKAUDIO LIMITED. ANY REPRODUCTION IN PART OR AS A WHOLE WITHOUT THE WRITTEN PERMISSION OF CLOCKAUDIO LIMITED IS PROHIBITED.

Client Approval		NOTES	NAME	DATE	<b>CLOCKAUDIO</b>
COMPANY	Brass		DRAWN	C. Budgen 05/01/12	
NAME			CHECKED		
SIGNATURE			REVISION		
DATE		TOLERANCES: +/- 2mm (0.08")			
		FINISH			SIZE <b>A</b> DWG. NO. <b>880</b> REV.
		DO NOT SCALE DRAWING			SCALE:1:1 WEIGHT: SHEET 1 OF 1

C 011E-RF